

LARGE QWIX™

FIXATION AND POSITIONING SCREW



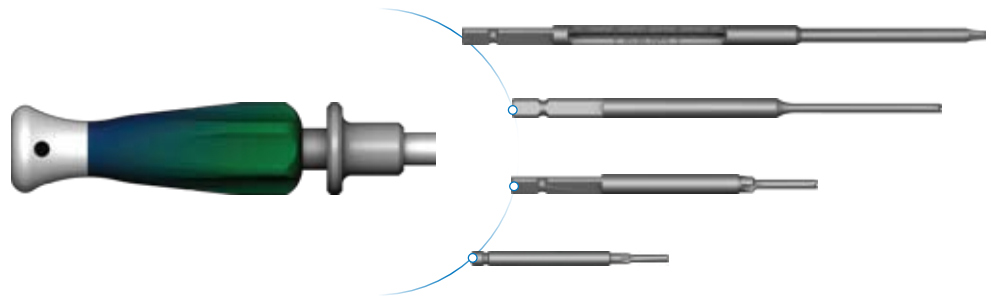
SURGICAL TECHNIQUE

LOWER
EXTREMITY
SOLUTIONS

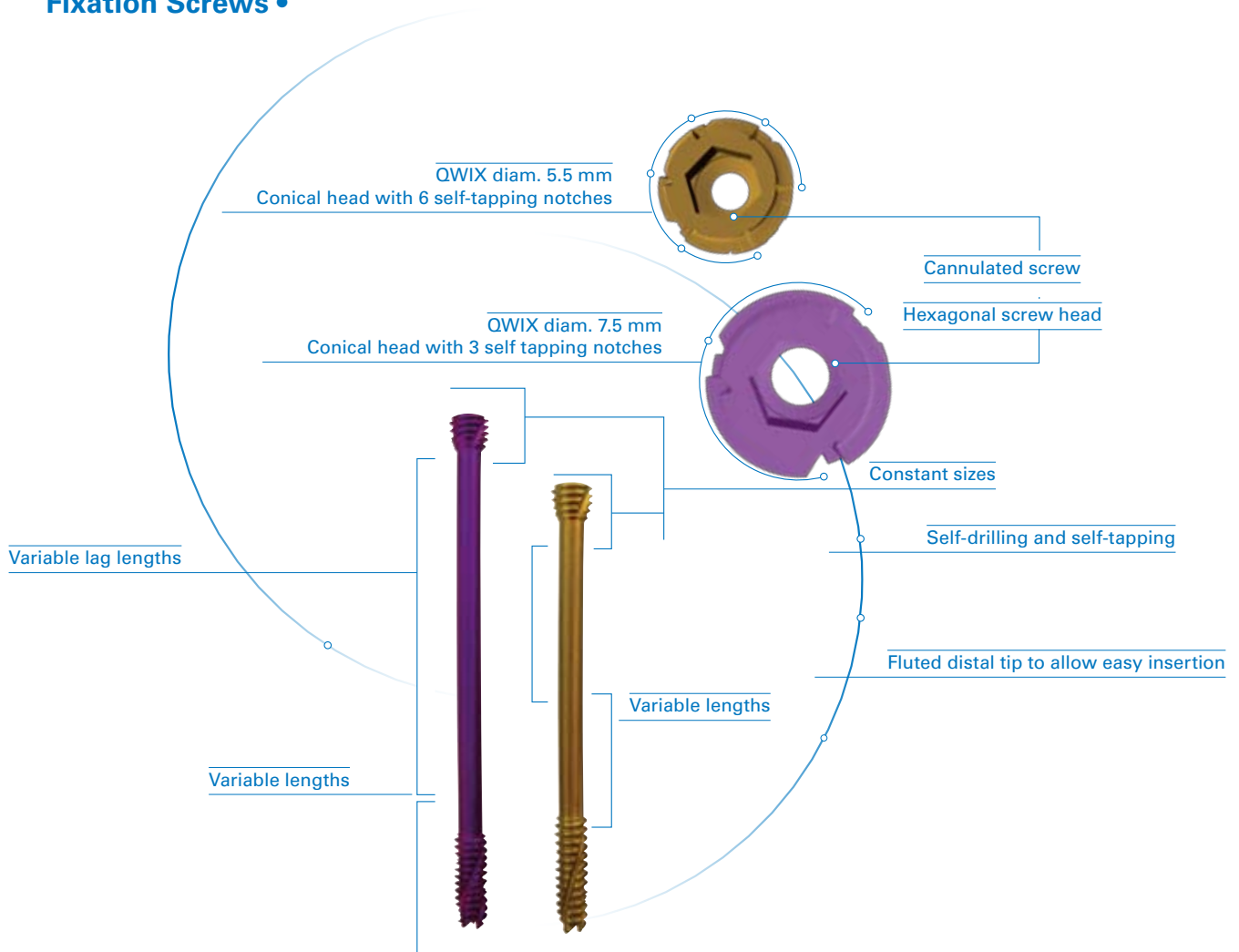
 **INTEGRA™**
Extremity Reconstruction

Instruments •

Modular handle with AO attachment.



Fixation Screws •



LARGE QWIX™

FIXATION AND POSITIONING SCREW

Concept •

The LARGE QWIX™ screws were designed to provide speed and precision for challenging surgical situations in extremity fixation. The LARGE QWIX unique design allows:

- Optimal and reproducible compression: variable head and lag lengths
- Accurate insertion with minimal soft tissue conflict: the head is completely embedded in the bone
- To address multiple fixation and osteotomy sites: two available diameters (5.5 mm and 7.5 mm)
- Precise placement over a K-wire in percutaneous surgery
- Partially and fully threaded designs for various indications

Indications •

The QWIX screw is indicated for fixation of bone fractures or for bone reconstruction.

Examples include:

- Mono or Bi-cortical osteotomies in the foot
- Fracture management in the foot
- Fixation of bone fragments in long bone or small bone fractures
- Arthrodesis in foot or ankle surgery

The size of the chosen screw should be adapted to the specific indication.

Contraindications:

The implant should not be used in a patient who has currently, or who has a history of:

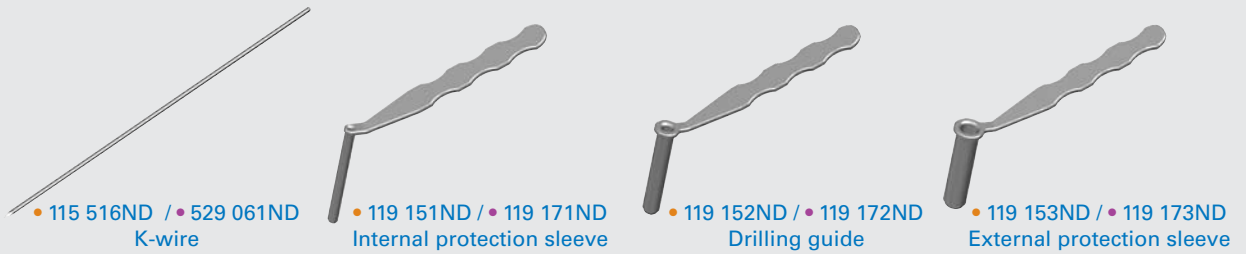
- Local or systemic acute or chronic inflammation
- Active infection or inflammation
- Suspected or documented metal allergy or intolerance

Description •

Titanium screw diameters 5.5 mm and 7.5 mm.

- Self-drilling and self-tapping
- Completely intra-osseous fixation
- Large range of screw lengths:
 - 5 mm increment for the LARGE QWIX diam. 5.5 mm
 - 5 mm increment for the LARGE QWIX diam. 7.5 mm
- 2 designs:
 - Partially-threaded compression screw
 - Fully-threaded positioning screw
- Variable lags designed specifically for extremity fixation
- Optional K-wire guided drilling and insertion
- Manufactured from Titanium alloy: Ti-6Al-4V, ISO 5832-3 ASTM F136

PREPARE



Surgical Technique



As the manufacturer of this device, Integra does not practice medicine and does not recommend this or any other surgical technique for use on a specific patient. The surgeon who performs any implant procedure is responsible for determining and using the appropriate techniques for implanting the device in each patient.

Patient positioning •

The LARGE QWIX™ screws and instrumentation are color coded :

- ● Yellow for 5.5 mm screws
- ● Purple for 7.5 mm screws

Step 1 • Positioning Guide Pin

- 1-1** A 1.6 or 2.5mm (115516ND/529061ND) K-wire should be introduced to achieve temporary fixation and maintain alignment. A drill guide (119151ND/119152ND/119153ND) and soft tissue protector (119151ND/119172ND/119173ND) is offered to prevent entrapment of the soft tissues during insertion.

(Note: The use of x-rays is recommended to check the positioning and depth of the k-wire.)



Step 2 • Screw Length Measurement

- 2-1** The measuring device is graduated in accordance with the various K-wires included within the set. The measuring device should be placed along the K-wire such that the tip is in contact with the surgical site. The appropriate screw length is determined directly from the measuring device on the side marked «K-wire 200mm/ K-wire 250mm»

(Note: The measurement taken from the measuring device is directly related to the positioning of the guide pin and therefore, is not considered accurate unless the guide pin is positioned correctly. The surgeon may decide to add or deduct a few millimeters depending on the position of the guide pin and the desire to obtain mono or bi-cortical fixation.)





Step 3 • Bone Preparation

Once the 1.6 / 2.5 mm diameter K-wire is in place, the drills are used to prepare for insertion of the screw. Although the LARGE Qwix screws are self-drilling and self-tapping, pre-drilling is recommended, in the case of sclerotic bone.

3-1 Bone Preparation - Mono-cortical fixation

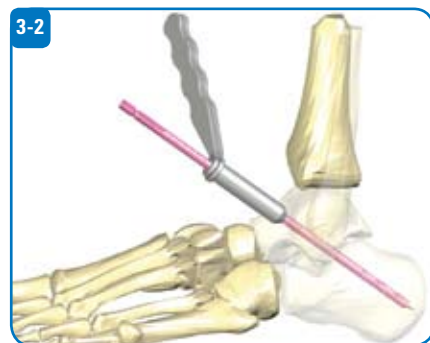
The short cannulated drill (119155ND/119175ND) is attached to the T-handle (119177ND) or surgical power driver to prepare a hole for the head of the screw. An external protection sleeve is provided for the soft tissues during this stage (119153ND/119173ND).

(Note: The drill has three markings, «30/45/90 degrees», which correspond to the top of the protective sleeve. If the desired screw will be placed at a 90 degree angle relative to the bone surface, it is recommended to drill until the 90 degree marker on the drill reaches the top of the protective sleeve. The same applies if you are placing the screw at 30 and 45 degrees relative to the bone surface.)



3-2 Step 3.2 • Bone Preparation - Bi-cortical fixation

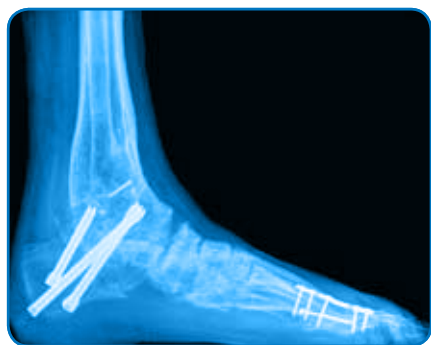
Following step 3.1, it is recommended that a long drill (119154ND/119174ND) be used for bi-cortical fixation to prepare the distal cortex for introduction of the screw. The long drill is introduced over the guide wire and should be inserted until the far cortex is prepared. In order to confirm proper screw length, the long drill is graduated, allowing the screw length to be determined from the drill at the bone surface closest to the protection sleeve.



Step 4 • Screw Insertion

4-1 Following proper bone preparation, the LARGE Qwix screw can be introduced over the guide pin with a cannulated Hex screwdriver (119156ND/119176ND) and T-handle.

(Note: The head of the screw should be flush with the outer cortex upon final placement.)



LARGE QWIX™

FIXATION AND POSITIONING SCREW

5.5mm Qwix Fixation Screw

| Sterile | Length |
|-------------|--------|
| 111 530 SND | 30 mm |
| 111 535 SND | 35 mm |
| 111 540 SND | 40 mm |
| 111 545 SND | 45 mm |
| 111 550 SND | 50 mm |
| 111 555 SND | 55 mm |
| 111 560 SND | 60 mm |
| 111 565 SND | 65 mm |
| 111 570 SND | 70 mm |
| 111 575 SND | 75 mm |
| 111 580 SND | 80 mm |



5.5mm Qwix Positioning Screw

| Sterile | Length |
|-------------|--------|
| 121 530 SND | 30 mm |
| 121 535 SND | 35 mm |
| 121 540 SND | 40 mm |
| 121 545 SND | 45 mm |
| 121 550 SND | 50 mm |
| 121 555 SND | 55 mm |
| 121 560 SND | 60 mm |
| 121 565 SND | 65 mm |
| 121 570 SND | 70 mm |
| 121 575 SND | 75 mm |
| 121 580 SND | 80 mm |



7.5mm Qwix Fixation Screw

| Sterile | Length |
|-------------|--------|
| 111 740 SND | 040 mm |
| 111 745 SND | 045 mm |
| 111 750 SND | 050 mm |
| 111 755 SND | 055 mm |
| 111 760 SND | 060 mm |
| 111 765 SND | 065 mm |
| 111 770 SND | 070 mm |
| 111 775 SND | 075 mm |
| 111 780 SND | 080 mm |
| 111 785 SND | 085 mm |
| 111 790 SND | 090 mm |
| 111 795 SND | 095 mm |
| 111 800 SND | 100 mm |
| 111 805 SND | 105 mm |
| 111 810 SND | 110 mm |
| 111 815 SND | 115 mm |
| 111 820 SND | 120 mm |



7.5mm Qwix Positioning Screw

| Sterile | Length |
|-------------|--------|
| 121 740 SND | 040 mm |
| 121 745 SND | 045 mm |
| 121 750 SND | 050 mm |
| 121 755 SND | 055 mm |
| 121 760 SND | 060 mm |
| 121 765 SND | 065 mm |
| 121 770 SND | 070 mm |
| 121 775 SND | 075 mm |
| 121 780 SND | 080 mm |
| 121 785 SND | 085 mm |
| 121 790 SND | 090 mm |
| 121 795 SND | 095 mm |
| 121 800 SND | 100 mm |
| 121 805 SND | 105 mm |
| 121 810 SND | 110 mm |
| 121 815 SND | 115 mm |
| 121 820 SND | 120 mm |



Instrumentation

| Reference | Description |
|-----------|---|
| 115 516ND | K-wire diam. 1.6 mm / L. 200 mm |
| 119 150ND | Measurer 200 and 250 mm |
| 119 151ND | Internal protection sleeve for 5.5 mm screws |
| 119 152ND | Drilling guide for 5.5 mm screws |
| 119 153ND | External protection sleeve for 5.5 mm screws |
| 119 154ND | Cannulated drill diam. 4.2-1.8 mm / L. 180 mm |
| 119 155ND | Short cannulated drill for 5.5 mm screws |
| 119 156ND | Hex screwdriver 3 mm |
| 119 170ND | Cylinder |

| Reference | Description |
|-----------|---|
| 119 171ND | Internal protection sleeve for 7.5 mm screws |
| 119 172ND | Drilling guide for 7.5 mm screws |
| 119 173ND | External protection sleeve for 7.5 mm screws |
| 119 174ND | Cannulated drill diam. 5.5-2.7 mm / L. 210 mm |
| 119 175ND | Short cannulated drill for 7.5 screws |
| 119 176ND | Hex screwdriver 4 mm |
| 119 177ND | T-handle quick coupling |
| 529 061ND | K-wire diam. 2.5 mm / L. 250 mm |
| 121 950ND | Instrumentation set, composed of: 121 951ND: Stainless steel rack (Basis) 996 200ND: Lid |

INTEGRA™
Extremity Reconstruction

Integra LifeSciences Corporation
311 Enterprise Drive • Plainsboro, NJ 08536
800-654-2873 • 609-275-0500 (Outside USA) • 609-275-5363 (Fax)
+33 (0)4 37 47 59 10 (International) • +33 (0)4 37 47 59 29 (Fax)
www.Integra-LS.com

