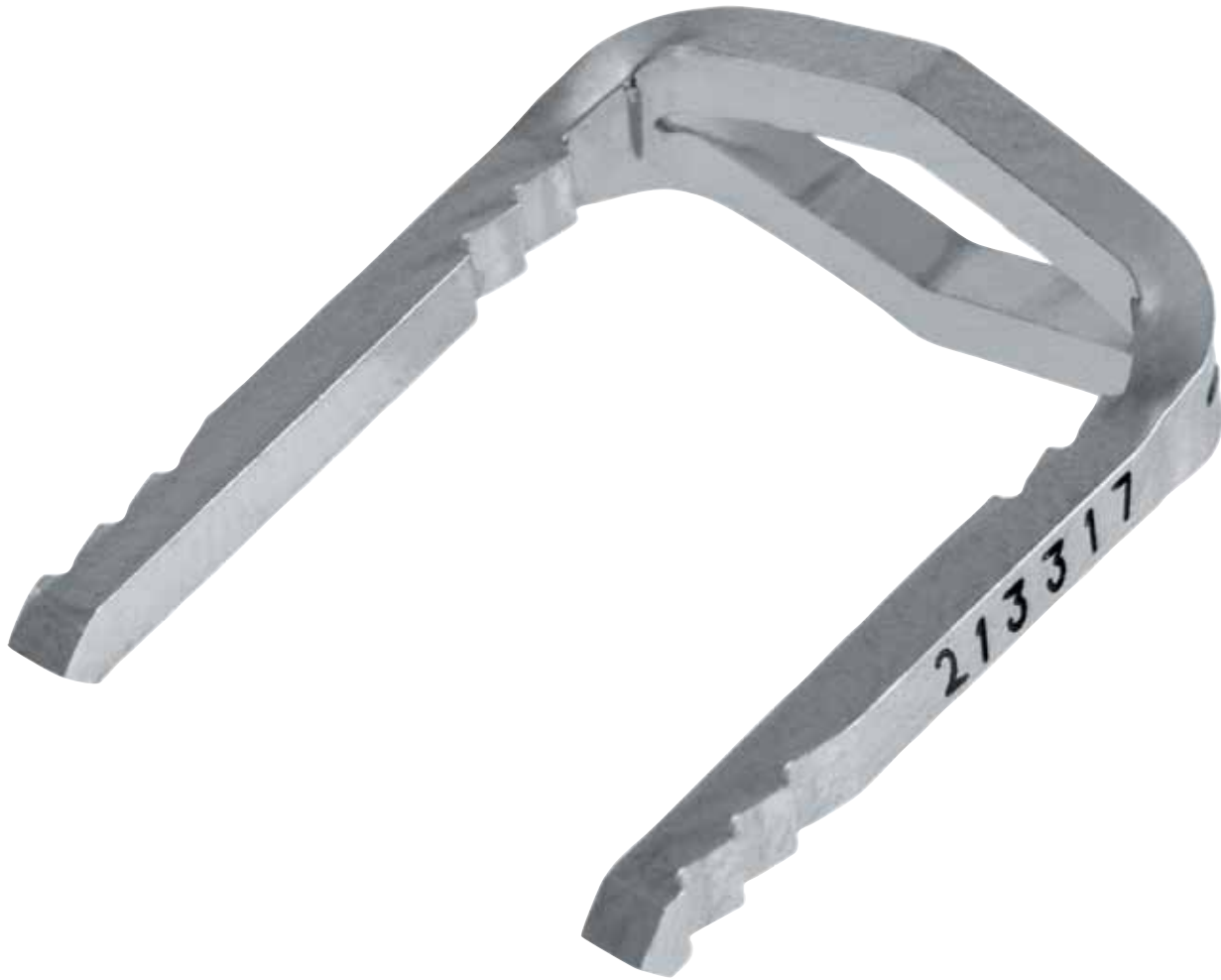


UNI-CLIP®

COMPRESSION STAPLE

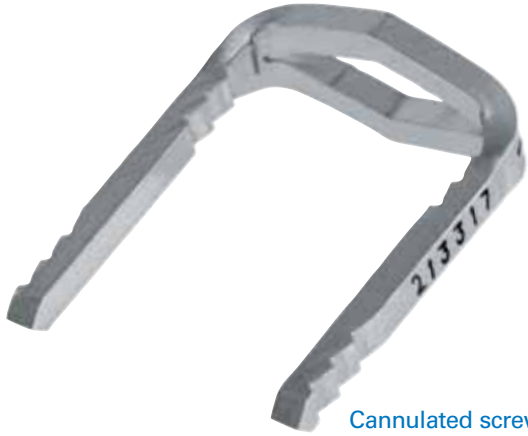


- **Functionality - Small Bone Fragment Fixation**
- **Flexibility - Comprehensive Product Portfolio**
- **Stability - Stainless Steel Implant**

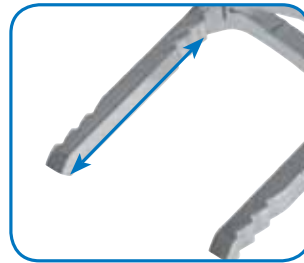
**LOWER
EXTREMITY
SOLUTIONS**

 **INTEGRA™**
Extremity Reconstruction

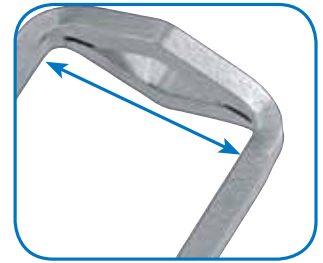
UNI-CLIP® COMPLETE



Cannulated screw

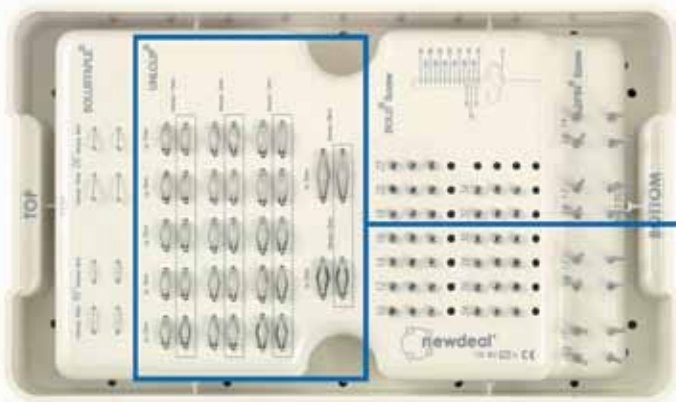


7 leg length:
13, 14, 15, 16, 17, 12 & 20 mm



5 sizes of interaxis:
11, 12, 13, 15 & 20 mm

FOREFOOT SET



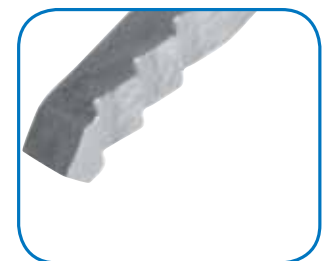
UNI-CLIP STAPLES



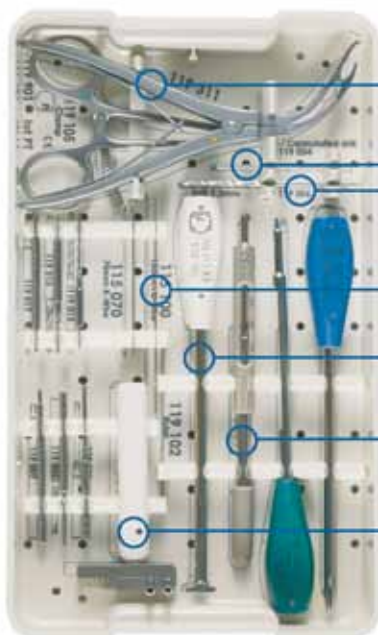
Lot number and reference marking for easier product traceability



Internal notches



External notches



UNI-CLIP SPREADING FORCEPS

CANNULATED DRILL DIAM. 2.2 MM
DRILL DIAM. 2.2 MM

K-WIRE LENGTH 100 MM

UNI-CLIP IMPACTOR

DEPTH GAUGE

UNI-CLIP DRILL GUIDE

SSION STAPLE



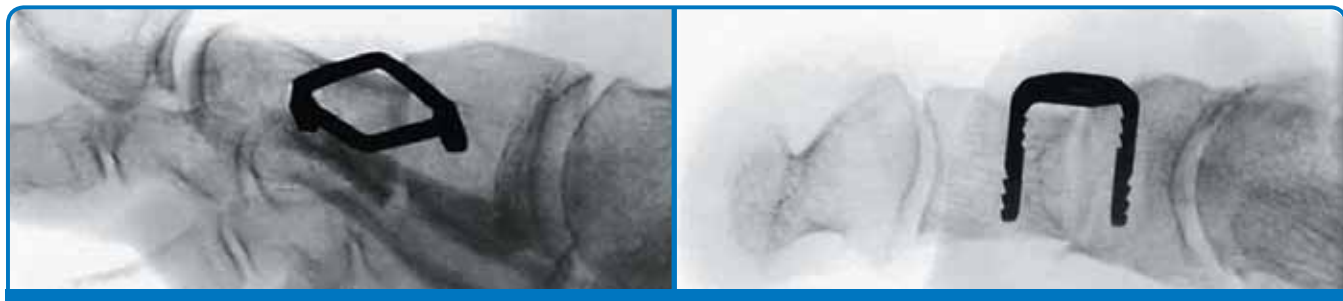
Description

Stainless steel mechanical compression staple.

- True compression, adjustable and controlled.
- Large range of sizes.
 - => Interaxis: 11, 12, 13, 15 and 20 mm.
 - => Legs: 13, 14, 15, 16, 17 and 12 & 20 mm.

Note : Compression (by opening the olive), should be discontinued when the bone fragments are in contact with each other.

- Material: stainless steel
316L ISO 5832-1 ASTM F138 & F139.
- Patented implant.



INDICATIONS*

The UNI-CLIP staple is indicated for fixation of bone fractures or for bone reconstruction.

- Arthrodesis in foot surgery.
- Fractures management in the foot.
- Mono or bi-cortical osteotomies in the foot.
 - Distal or proximal metatarsal osteotomies.
 - Fixation of osteotomies for Hallux Valgus treatment (such as Scarf, Chevron, etc.)

The size of the chosen staple should be adapted to the specific indication.

OTHER POSSIBLE INDICATIONS

- Arthrodesis in hand surgery.
- Fractures management in the hand.
- Mono or bi-cortical osteotomies in the hand.
- Distal or proximal metacarpal osteotomies.

* See package insert for full prescribing information.

UNI-CLIP®

COMPRESSION STAPLE

Uni-Clip

Interaxis: 11		Interaxis: 12		Interaxis: 13	
Reference	Length	Reference	Length	Reference	Length
213 113ND	13 mm	213 213ND	13 mm	213 313ND	13 mm
213 114ND	14 mm	213 214ND	14 mm	213 314ND	14 mm
213 115ND	15 mm	213 215ND	15 mm	213 315ND	15 mm
213 116ND	16 mm	213 216ND	16 mm	213 316ND	16 mm
213 117ND	17 mm	213 217ND	17 mm	213 317ND	17 mm
Interaxis: 15		Interaxis: 20			
Reference	Length	Reference	Length		
213 512ND	12 mm	213 820ND	20 mm		

Uni-Clip (Sterile)

Interaxis: 11		Interaxis: 12		Interaxis: 13	
Reference	Description	Reference	Description	Reference	Description
213 113SND	13 mm	213 213SND	13 mm	213 313SND	13 mm
213 114SND	14 mm	213 214SND	14 mm	213 314SND	14 mm
213 115SND	15 mm	213 215SND	15 mm	213 315SND	15 mm
213 116SND	16 mm	213 216SND	16 mm	213 316SND	16 mm
213 117SND	17 mm	213 217SND	17 mm	213 317SND	17 mm
519 920ND	Lid				
Interaxis: 15		Interaxis: 20			
Reference	Description	Reference	Description		
213 512SND	12 mm	213 820SND	20 mm		

Instrumentation

Reference	Description
119 004ND	Cannulated drill diam. 2.2 mm
119 006ND	Drill diam. 2.2 mm
119 301ND	Uni-clip drill guide
119 307ND	Measurer
119 309ND	Impactor
119 311ND	Uni-clip spreading forceps
115 100ND	K-wire 10/10 length 100 mm
119 900ND	Sterilization container

- The products are manufactured and referenced within the frame of the standards in force.
- Implantation procedures are described in the surgical technique.
- Non-contractual document. The manufacturer reserves the right, without prior notice, to modify the products in order to improve their quality.
- WARNING: Federal law (USA) restricts this device to sale by or on the order of a physician.



INTEGRA™
Extremity Reconstruction

Integra LifeSciences Corporation
311 Enterprise Drive • Plainsboro, NJ 08536
877-444-1122 (USA) • 609-936-5400 (Outside USA) • 866-800-7742 (Fax)
www.Integra-LS.com

