

# SPIN<sup>®</sup>

SNAP-OFF<sup>™</sup> SCREW

## SPIN 2.7

Recommended for soft or osteoporotic bones



## SPIN



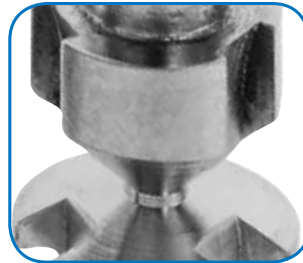
- Functionality - Small Bone Fragment Fixation
- Flexibility - Comprehensive Product Portfolio
- Stability - Titanium Implants

LOWER  
EXTREMITY  
SOLUTIONS

# SPIN<sup>®</sup> SNAP-C



Three inclusions in the screw head for an optimal screwdriver grip.



Maximized torque effect.  
Reduced soft tissue irritation with low profile head.



Non threaded part (lag) for optimal compression.



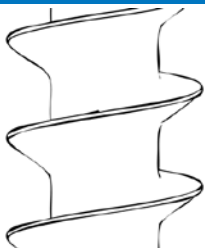
Cortico-cancellous thread.

## Differences •

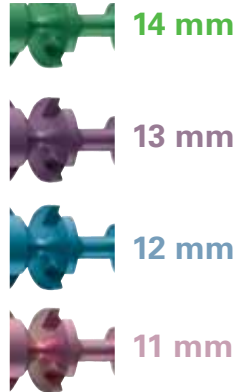
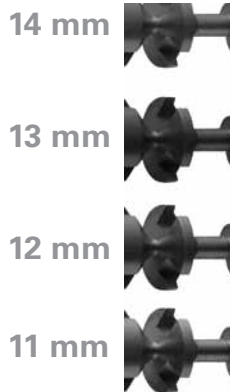
SPIN

SPIN 2.7

### THREADED



### COLOR CODED

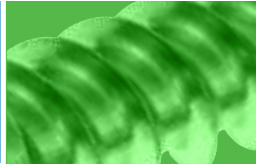


Self drilling, self tapping with starter tip.



Lot number, reference and length marking for easier product traceability.

# DF F™ SCREW



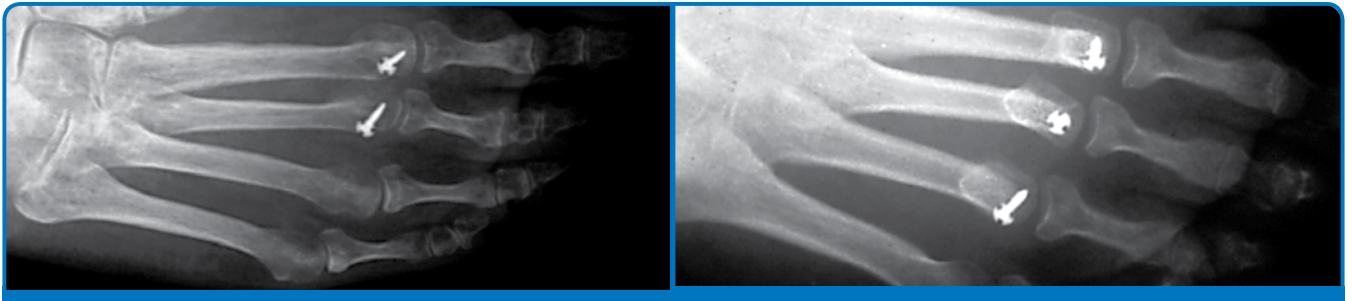
## Description

Titanium Snap-off screw.

- True compression, adapted and controlled.
- Auto-separable stand for snap-off effect.
- Self-drilling and self-tapping.

Material: titanium alloy  
TIAI6V4, ISO 5832-3 ASTM F136.

Patented implant.



## INDICATIONS\*

The Spin screw is indicated for fixation of bone fractures or for bone reconstruction.

- Fixation of small bone fragments.
- Weil osteotomy.
- Mono-cortical fixation.
- Osteotomies and fractures fixation in the foot.

## OTHER POSSIBLE INDICATIONS

- Osteotomies and fractures fixation in the hand.

\* See package insert for full prescribing information.

# SPIN<sup>®</sup>

## SNAP-OFF™ SCREW

### SPIN

Catalog Number	Description
112 011ND	Diam. 2 mm - Length 11 mm
112 012ND	Diam. 2 mm - Length 12 mm
112 013ND	Diam. 2 mm - Length 13 mm
112 014ND	Diam. 2 mm - Length 14 mm

### SPIN 2.7

Catalog Number	Description
112 111ND	Diam. 2.7 mm - Length 11 mm
112 112ND	Diam. 2.7 mm - Length 12 mm
112 113ND	Diam. 2.7 mm - Length 13 mm
112 114ND	Diam. 2.7 mm - Length 14 mm

### Instrumentation

Catalog Number	Description
119 201ND	Spin screwdriver
119 900ND	Sterilization container



- The products are manufactured and referenced within the frame of the standards in force.
- Implantation procedures are described in the surgical technique.
- Non-contractual document. The manufacturer reserves the right, without prior notice, to modify the products in order to improve their quality.
- WARNING: Federal law (USA) restricts this device to sale by or on the order of a physician.

 **INTEGRA™**  
Extremity Reconstruction

Integra LifeSciences Corporation  
311 Enterprise Drive • Plainsboro, NJ 08536  
877-444-1122 (USA) • 609-936-5400 (Outside USA) • 866-800-7742 (Fax)  
[www.Integra-LS.com](http://www.Integra-LS.com)



Newdeal and Spin are registered trademarks of Integra LifeSciences Corporation or its subsidiaries.  
Snapp-Off and the Integra wave logo are trademarks of Integra LifeSciences Corporation or its subsidiaries.  
©2009 Integra LifeSciences Corporation. All rights reserved. Printed in the USA 500 ER3401-06/09