

KGTI™

KINETIK GREAT TOE IMPLANT SYSTEM



Pain Relief With Range Of Motion

KGTI™ Kinetik Great Toe Implant System

Made from cobalt chrome, titanium alloy, and UHMWPe, the KGTI Kinetik Great Toe Implant System is a reconstructive device created for patients who have suffered degenerative changes or trauma to the great toe. The system offers implants that are anatomically and biomechanically designed along with instrumentation that is simple and precise.

Functionality-

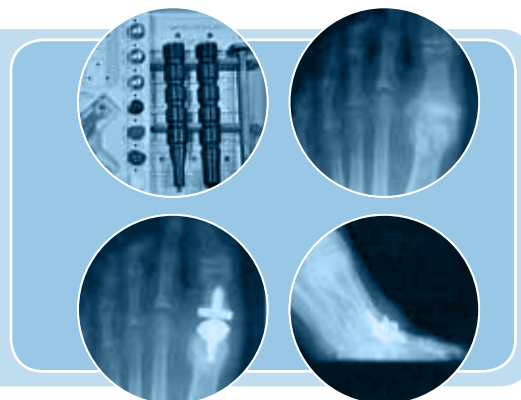
Total replacement of the 1st metatarsophalangeal joint

Flexibility-

Comprehensive product portfolio

Stability-

Cobalt chrome and titanium alloy implants



 **INTEGRA™**
Extremity Reconstruction

KGTI™

KINETIK GREAT TOE IMPLANT SYSTEM

FEATURES

- Two component system offers an alternative to fusion for the non-salvageable 1st MPJ
- Non-constrained implant allows for a full anatomic range of motion
- Dorsal flange on metatarsal component extends dorsal range of motion
- Biocompatible materials may cause less tissue reaction than non-metal implants
- Optimal stem design improves implant stability
- Interchangeable components and complete range of sizes provide a precise fit
- Simple instrumentation allows for reproducible results

COMPONENT MATERIAL

- Metatarsal Component: Cobalt Chrome
- Phalangeal Component: Titanium Alloy and Polyethylene (UHMWPe)

Implants

Reference	Description	Size
012002	Metatarsal	1, Right
012003	Metatarsal	1, Left
012004	Metatarsal	2, Right
012005	Metatarsal	2, Left
012006	Metatarsal	3, Right
012007	Metatarsal	3, Left
012010	Phalangeal	0
012012	Phalangeal	1
012014	Phalangeal	2
012016	Phalangeal	3

Disposables

Reference	Description
015080	M/P Reamer
015090	Phalangeal Reamer
015000	Instrument Set



Integra LifeSciences Corporation
 311 Enterprise Drive Plainsboro, NJ 08536 USA
www.Integra-LS.com
 USA and Canada: 877-444-1122 (USA) • 609-936-5400 (Outside USA) • 866-800-7742 (Fax)

