

K2™

HEMI TOE IMPLANT SYSTEM



Designed to Fit

K2™ Hemi Toe Implant System

Made from Cobalt Chrome and a Titanium Plasma Coated Stem, the K2 Hemi Toe Implant System is an anatomically designed, one-piece surface replacement system. This reconstructive device is indicated for patients who experience painful loss of motion due to degenerative changes or trauma to the base of the hallux.

Functionality-

Replacement system for the base of the hallux

Flexibility-

Comprehensive product portfolio

Stability-

Titanium plasma coated stem implant

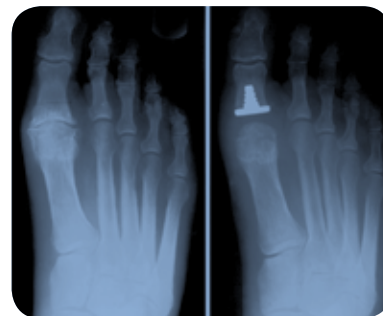


K2™

HEMI TOE IMPLANT SYSTEM

FEATURES

- Anatomically designed implant matches the shape of the resected proximal phalanx.
- Low profile implant minimizes bone resection.
- Groove on the plantar surface of the implant accommodates the FHL tendon to prevent impingement.
- Titanium plasma coated stem encourages bony ingrowth for solid fixation.
- Suture hole allows easy FHL tendon transfer to add flexor power and minimize the potential for hallux hammertoe.
- Simple, precise instrumentation minimizes OR time and allows for reproducible results.



COMPONENT MATERIAL

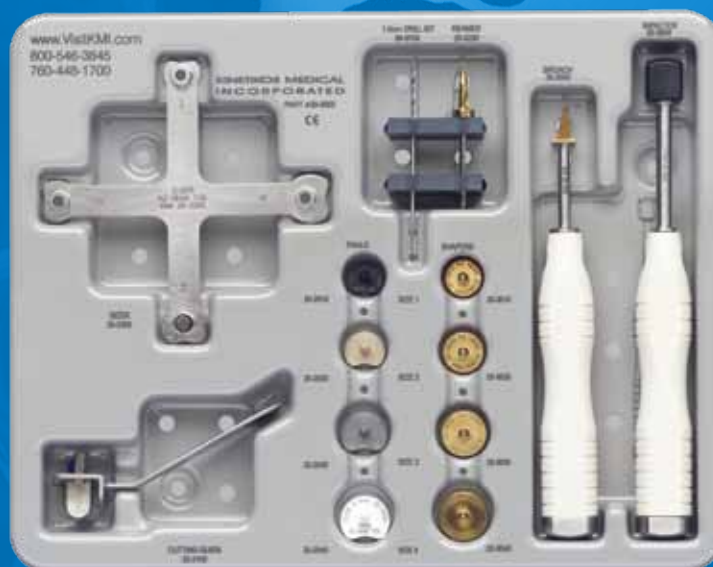
- Cobalt Chrome with Titanium Plasma Coated Stem

Implants

Reference	Description	Size
201010	K2 Hemi Toe Implant	1
201020	K2 Hemi Toe Implant	2
201030	K2 Hemi Toe Implant	3
201040	K2 Hemi Toe Implant	4

Single Use Instruments

203200	Reamer
203415	1.5mm Drill Bit
206000	Instrument Set



Integra LifeSciences Corporation
 311 Enterprise Drive Plainsboro, NJ 08536 USA
www.Integra-LS.com
 USA and Canada: 877-444-1122 • 609-936-5400 (Outside USA) • 866-800-7742 (Fax)

